

User manual

(EN)



ab TereBox 2T

Important Safety Instructions

- 1) Read these instructions.
 - 2) Keep these instructions.
 - 3) Heed all warnings.
 - 4) Follow all instructions.
 - 5) Do not use this apparatus near water.
 - 6) Clean only with dry cloth.
 - 7) Do not block any ventilation openings, install in accordance with the instructions.
 - 8) Do not install near any heat sources such as radiations, heat registers, stoves, or other apparatus (including amplifiers) that produce heat.
 - 9) Do not defeat the safety purpose of the polarized plug. If the provided plug does not fit into your outlet, consult an electrician for replacement of the obsolete outlet.
 - 10) Protected the power cord from being walked on or pinched particularly at plugs, convenience receptacles, and the point where they exit from the apparatus.
 - 11) Only use attachments/accessories specified by the manufacturer.
 - 12) Unplug this apparatus during lightning storms or when unused for long periods of time.
 - 13) Refer all servicing to qualified service personnel. Servicing is required when the apparatus has been damaged in any way, such as power-supply cord or plug is damaged, liquid has been spilled or objects have fallen into the apparatus, the apparatus has been exposed to rain or moisture, does not operate normally, or has been dropped.
 - 14) Mains plug is used as the disconnect device, the disconnect device shall remain readily operable.
 - 15) The ventilation should not be impeded by covering the ventilation openings with items, such as newspapers, table-cloth, curtains, etc.
 - 16) No naked flame sources, such as lighted candles, should be placed on the apparatus.
 - 17) Attention should be drawn to the environmental aspects of battery disposal.
 - 18) The use of apparatus in moderate climate.
 - 19) The apparatus shall not be exposed to dripping or splashing and that no objects filled with liquids, such as vases, shall be placed on the apparatus.
- WARNING:** To reduce the risk of fire or electric shock, do not expose this apparatus to rain or moisture.
- WARNING:** The batteries shall not be exposed to excessive heat such as sunshine, fire or the like.
- WARNING:** You must peel off the membrane of the top cover before using.Or it would harm



The symbol indicates that dangerous voltages constituting a risk of electric shock are present within this unit.



The symbol indicates that there are important operating and maintenance instructions in the literature accompanying this unit.



This symbol indicates that this product incorporates double insulation between hazardous mains voltage and user accessible parts. When servicing use only identical replacement parts.



CAUTION: When the apparatus was in electrostatic circumstance, it may be malfunction and need to reset by user.



WARNING: The USB memory stick should be plugged in the unit directly.

USB extension cable should not be used to avoid failing of data transferring and interference caused.

	This marking indicates that this product should not be disposed with other household wastes throughout the EU. To prevent possible harm to the environment or human health from uncontrolled waste disposal, recycle it responsibly to promote the sustainable reuse of material resources. To return your used device, please use the return and collection systems or contact the retailer where the product was purchased. They can take this product for environmental safe recycling.
--	--

Table of Contents

1. Front and Rear Panel	4
1.1 Front Panel	4
1.2 Rear Panel	4
2. Remote Control	5
2.1 Buttons	5
2.2 Installing the Battery.....	6
3. Connections.....	6
4. First Installation	6
4.1 Channel	7
4.2 Installation	8
4.3 Language	8
4.5 Time	9
4.6 System	10
4.6.1 Standby Setting.....	10
4.7 Media Center	11
5.Troubleshooting	12
6.Technical Specifications.....	13

1. Front and Rear Panel

1.1 Front Panel



- 1. REMOTE CONTROL SENSOR:** Used to receive the signal from the remote control.
- 2. LED DISPLAY:** Used to display the time or channel information.
- 3. CHANNEL UP:** Selects the previous Channel without using the remote control.
- 4. CHANNEL DOWN:** Selects the next Channel. without using the remote control.
- 5. STANDBY:** Used to switch the set top box to on or standby.

1.1.1 Rear Panel



- 1. ANT IN:** Used to connect the ANT to receive the signal
- 2. HDMI:** This socket connects to HDMI in device.
- 3. SCART:** This socket output RGB/CVBS and Audio L/R
- 4.S/PDIF:**This socket output digital audio.
- 5.DC IN :** Used to connect the 5V DC adapter.
- 6. IR:** Used to connect the remote Sensor .
- 7. USB JACK:** Used to connect to an external USB 2.0 device.

2. Remote Control

2.1 Buttons

- 1) MUTE: Mute or Restore Audio Output.
- 2) COLOUR BUTTONS:
 - ① Blue: Selects an Audio Language or Audio Mode;
 - ② Yellow: Displays Teletext Information.
 - ③ Green: Set video resolution.
 - ④ Red: Find program.
- 3) STOP: Stops media play.
- 4) F1: Timer setting.
- 5) RELOAD: Used to switch between the last two viewed channels.
- 6) SHIFT: Start to do Timeshift.
- 7) INFO: Displays additional channel information.
- 8) OK: Confirms an entry or selection. Displays the list of channels.
- 9) RIGHT/LEFT: Navigates through the Menus. Increases or decreases volume.
- 10) EXIT: Exits the current Menu or returns to the previous Menu.
- 11) PAGE+/-: Page up, Page down.
- 12) 0-9 (Numeric Buttons): Selects a channel or setting.
- 13) TV/RADIO: Switches from TV function to Radio function and from Radio to TV.
- 14) STANDBY: Switch the product to on or standby.
- 15) FAST FORWARD: Searches forwards during media play.
- 16) FAST REWIND: Searches backwards during media play.
- 17) PAUSE: Pauses media play.
- 18) PLAY: Starts or resumes media play.
- 19) CH+/CH-: Channel up/down



- 20) SUB: Selects Subtitles Language.
- 21) EPG: (Electronic Program Guide) Turns the program guide on.
- 22) UP / DOWN: Navigates through the Menus. Selects the next or previous Channel.
- 23) MENU: Turns on Main Menu
- 24) FAV: Opens the favorite group selection.
- 25) VOL+/-: Increases or decreases volume.
- 26) RECORD: Used to record the program
- 27) MEDIA: Goto local video manager.

2.2 Installing the Battery

Remove the battery cover from the Remote Control and put 2"AAA" size batteries inside the compartment.

The diagram inside the Battery Compartment shows the correct way to install the batteries.

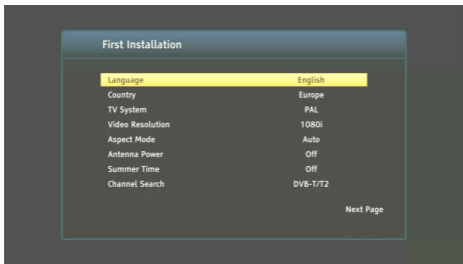
3. Connections

Caution: Make sure to check the voltage specification of the wall outlet is the same rating with the receiver. To prevent the risk of electric shock, do not open the cover or the back of the receiver.

Note: When connecting the receiver to other equipment, e.g., TV, VCR and amplifier, make sure to refer to relevant user manual for instruction. Also, make sure you disconnect all the equipment's from the mains supply before the connection.

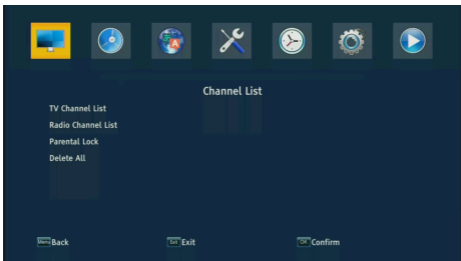
4. First Installation

After all connections have been made properly, switch on your TV. If you are using the receiver for the first time or have restored to factory default, the First Installation menu will appear on your TV screen. Press left/right key to select the OSD language of your preference. As the same operate to select other setting, then move to the Next Page , press OK to start search.



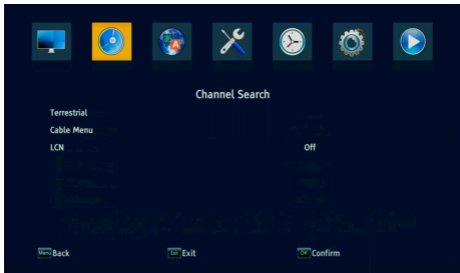
4.1 Channel

To access the Menu, press the MENU button and select [Channel list]. The Menu provides options to adjust the Channel Settings. Select an option and press OK or RIGHT to adjust that setting. Press the EXIT button to exit the Menu.



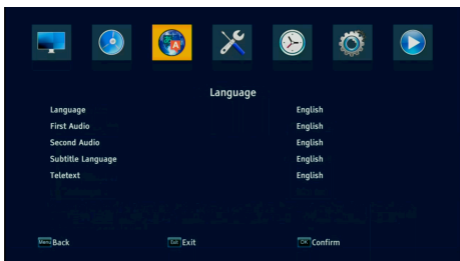
4.2 Installation

To access the menu, press MENU and select [channel search]. The Menu provides options to adjust the Installation settings. Terrestrial is for DVB - T2,Cable menu is for DVB-C.Select an option and press RIGHT/LEFT to adjust the settings. Press EXIT to exit the Menu.



4.3 Language

To access the Menu, press MENU and select [Language]. The menu provides options to adjust the OSD Language, First Audio and second Audio Language. Select an option and press RIGHT/LEFT.



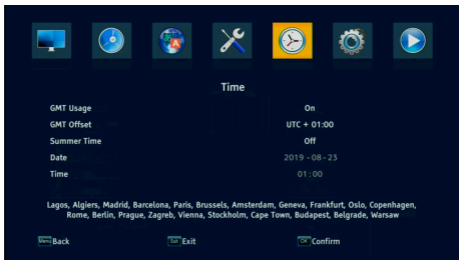
4.4 AV Setting

To access the Menu, press MENU and select [AV Setting]. The menu provides options to adjust the settings. Press the UP/DOWN key to select an option and press RIGHT/LEFT to adjust the setting. Press EXIT to exit the Menu.



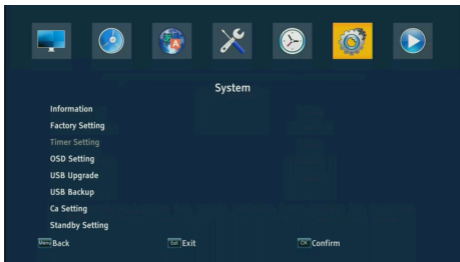
4.5 Time

To access the Menu, press MENU and select [Time]. The menu provides options to adjust the settings. Press the UP/DOWN key to select an option and press RIGHT/LEFT to adjust the setting. Press EXIT to exit the Menu.



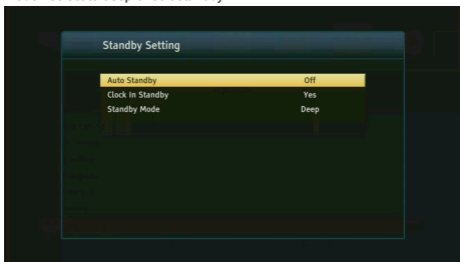
4.6 System

To access the Menu, press MENU and select [System].The menu provides options to adjust the settings. Press the UP/DOWN key to select an option and press RIGHT/LEFT to adjust the setting. Press EXIT to exit the Menu.



4.6.1 Standby Setting

To access the Menu, press the Media and select [System].Move to Standby Setting item, press ok enter to set. The Auto Standby : to set how long will the machine automatically stand by without operating the remote control. The Clock In Standby : Select whether or not to display the time in the standby. Standby Mode : select to deep or soft standby.



4.7 Media Center

To access the Menu, press the Media button on the remote control. The menu provides options to Movie and playback Music and Photo files, Record Files; it can support MP3 JPEG, BMP files.

STB will support USB device with NTFS and FAT32 file system.



5.Troubleshooting

Problem	Potential Reasons	What to do
No picture	Power isn't connected	Connect the power
	The power switch is not on	Switch on the power
Screen shows No Signal	Not connect DVB-T cable	Plug in the DVB-T cable
	Incorrect setting	Set up correct parameter
No sound from Speaker	No or incorrect connection with audio cable	Connect the audio cable correctly
	Mute the sound	Switch on the correct volume control
	Incorrect sound track	Try another sound track
Only sound, no image on the screen	No or incorrect connection with AV cable	Connect the audio cable correctly
	The program is a radio program	Press <TV/RADIO> key to shift into TV mode
Remote control unit is not workable	The battery is exhausted	Change new battery
	Remote control unit is not in the right opposite of the front panel or too far from it	Adjust the way of holding remote control unit and near from the panel
The image stop suddenly or mosaic	The signal is too weak	Strengthen the signal

6. Technical Specifications

Item	Specification	
Tuner	Frequency Range	VHF Band:174 MHz ~230MHz UHF Band:470 MHz ~868MHz
	Bandwidth	6MHz, 7MHz, 8MHz,
	Input Impedance	75Ohm
	Signal Input Level	-65 ~ -25dBm
	RF Power Output	5V,Max 100mA
Demodulation	Demodulator	16QAM/64QAM/256QAM
	Guard Intervals	1/4,19/256,1/8,19/128,1/16,1/32,1/128
	Code Rate	DVB-T:Viterbi+ReedSolomon 1/2,2/3,3/4,5/6,7/8 DVB-T2:LPDC+BCH
Connections	ANT IN	IEC connector
	SCART	RGB/CVBS VIDEO
	USB	USB 2.0(5V,Max 500mA)
Power	Input	DC IN 5V/1.5A
	Consumption	Max 7.5W
Display	Decoder Module	PAL,NTSC
	Resolution	720X576(PAL),720X480(NTSC),720P,1080i 480i,480P,576i,576P,1080P
Decoding	Aspect Rate	4:3(Letterbox, Pan& Scan)16:9
	Video	MPEG2 Transport MP@ML.HL
		MPEG4 AVC/H.264/ HP@L4//H.265
Audio	MPEG2 Audio Layer I&II	
Others	Compliance	Standard DVB-T (EN 300 744) & DVB-T2 (EN 302 755)
	Sound Mode	Right, Left, Stereo

7. Accessories

Remote control unit, batteries, 2pin adapter, user's manual

ab  **TereBox 2T**