

User manual (EN)



© 2012 Abtech. All rights reserved.

Full HD 1080p	H265 codec	Media Player	Auto FastScan	Auto DiSEqC	DLNA	PVR	TimeShift	Eco friendly
CPU NEW CORE 1GHz	RAM HIGH SPEED DDRIII MEMORY	Flash NEW FLASH MEMORY	Combo S2 T2 C2 TUNER	Display VFD DISPLAY	CI COMMON INTERFACE 1x	CA SMARTCARD READER 1x	USB UNIVERSAL SERIAL PORT 2x	LAN 100 Mbit ETHERNET 1x

Content

Safety Precaution	3
1. Reference	4
1.1 General Features	4
1.2 Accessories	5
2. Product Overview	6
2.1 Front Panel	6
2.2 Rear Panel	7
2.3 Remote Control Unit (RCU)	8
3. Connection with Other Device	10
3.1 Connecting to TV	10
3.2 Connecting the Antenna	11
4. Installation	13
4.2 Antenna Settings	13
4.3 Fast scan	18
4.4 Terrestrial Menu	18
4.5 Cable Menu	18
4.6 Factory Default	19
4.7 USALS Setup	19
5. Channel Manager	20
5.1 Edit Channel	20
5.2 Edit Favorite	21
5.3 Sort Channels	22
5.4 User Channel List	22
6. Settings	23
6.1 System Settings	23
6.2 OSD Setup	24
6.3 Parental control	25
6.4 Times	25
6.5 CI Menu	27

6.6	Connecting to the LAN	27
6.7	USB Update	28
6.8	About STB	28
7.	X-tras	29
7.1	Calendar	29
7.2	Games	29
7.3	Network Apps	29
8.	Multimedia	31
8.1	USB	31
8.2	Setting	32
8.3	Play Files	33
9.	Basic Operation	37
9.1	Audio	37
9.2	Satellite List	37
9.3	EPG	37
9.4	Subtitle	38
9.5	Teletext	38
9.6	Find channel	38
9.7	Program Information	39
10.	Channel List	40
10.1	OK List	40
10.2	Favorite List	40
11.	USB Control	42
11.1	Recording and Timeshift	42
11.2	PVR List	43
12.	Additional Information	44
12.1	Trouble Shooting	44
12.2	Technical Specification	46
12.3	Glossary	47

Safety Precaution

This STB has been designed and manufactured to satisfy the international safety standards. Please read the following safety precautions carefully before operating this receiver.

4 **Main Supply:**

Before operating, please check the units operating voltage is 90~250V AC 50/60Hz.

4 **Overload:**

Do not overload a wall outlet, extension cord or adapter, neither use damaged power cord or touch it with wet hand as this may result in electric shock.

4 **Liquid:**

The receiver shall not be exposed to dripping or splashing water, and that no objects filled with liquids, such as base, shall be placed on the apparatus.

4 **Ventilation:**

Keep the slots on top of the receiver uncover to allow sufficient airflow to the unit. Do not put the receiver on soft furnishings or carpets. Do not expose the receiver to direct light or do not place it near a heater or in humid conditions. Do not stack other electronic equipments on top of the receiver.

4 **Cleaning:**

Plug out the receiver from the wall outlet before cleaning. Clean the receiver by a soft cloth or mild solution of washing-up liquid (no solvents).

4 **Connection:**

Disconnect the receiver from the mains when you connect it to satellite LNB or disconnect it from LNB. Failure would possibly cause damage to the LNB.

4 **Location:**

Put the receiver indoor in order to avoid lightening, raining or sunlight.

4 **Uncover:**

Do not remove the cover, to reduce the risk of electric shock. Contact qualified and licensed service personnel to repair the receiver, or contact your dealer.

1. Reference

1.1 General Features

DVB-S/DVB-S2 Satellite Compliant (MPEG-II/ MPEG-IV/ H.264)

SCPC & MCPC receivable from Ku and C band satellites

Universal, Single, Single S & C Band Wideband LNB

Sensitive Tuner with Loop-Through

DiSEqC1.0/1.1/1.2/1.3 (USALS)

Unicable Supported

Blind search supported

Auto DiSEqC Search

PAL/NTSC Conversion

True full Color (32 bits) on screen display (OSD)

Storing memory: 100 satellite, 4000 transponders and 6100 channels

26 favorite group and parental lock supported

Multi-language menu supported

Multi-language audio supported

Multi-language DVB Subtitle output

7 days Electronic Program Guide (EPG)

Teletext output through VBI and OSD

USB 2.0 Interface

CI module Supported

Support many network functions

1.2 Accessories

I Users manual

I Remote Control Unit

I Batteries

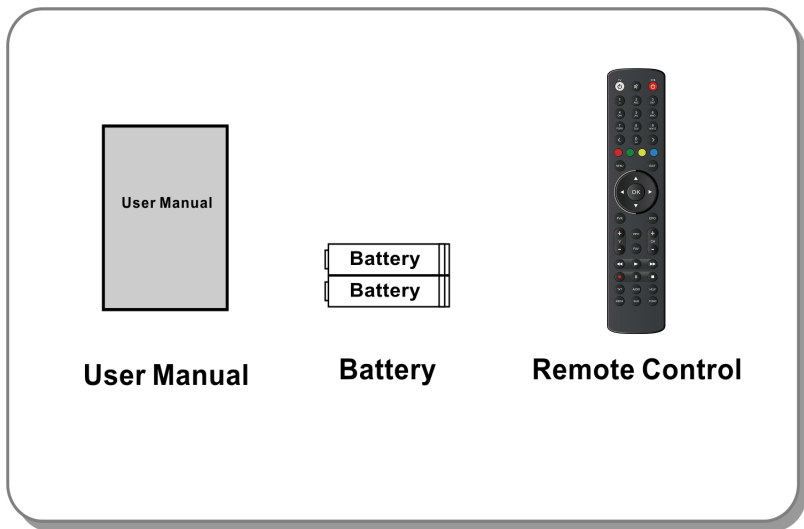


Figure1.Accessories

2. Product Overview

2.1 Front Panel



Figure 2. Front Panel

1. Power LED

Power indicator.

2. Display

It displays channel information. In standby mode it displays local time.

3. Power button

Switch between operation and standby modes.

4. CH+ /CHChange

channel in viewing mode and move the cursor up/down in menu mode.

2.2 Rear Panel

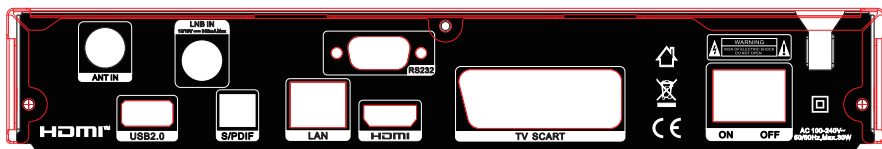


Figure 3. Rear Panel

1. LNB IN

Connect the satellite antenna cable.

2. USB2.0

One USB 2.0 Host Port.

3. SPDIF

Digital Audio output (Optical).

4. LAN

Connect to the internet using an Ethernet cable.

5. RS232

Connect to the computer using a serial line.

6. HDMI

Connect to the TV using an HDMI cable.

7. TV SCART

Connect to the TV using a Scart cable.

8. ON/OFF

Power on/off.

2.3 Remote Control Unit (RCU)

You can control this receiver by this remote controller with full function.

1. **STANDBY**: Switch between operation and standby modes.

2. **RED button**: Accessorial function.

3. **GREEN button**: Video format.

4. **MUTE**: Mute audio.

5. **II** : Pause/Time shift.

6. **◀◀**: Fast rewind./ Recall list.

7. **▶▶**:Fast forward.

8. **•**: Record.

9. **▶**: Play.

10. **■** : stop recording and playing.

11. **MENU**: Activate main menu.

12. **EXIT**: Exit current menu step by step.

13. **▲/▼/◀/▶** :Navigates through the Menus

14. **OK**: Confirm

15. **◀◀**: Press in live broadcast to switch to the last watched channel.

16. **EPG (Electronic Program Guide)**: Display the program guide.

17. **V+/V-** : Change volume in viewing mode.

18. **CH+/ch-**: Change program.

19. **INFO**: Display the program information.

20. **FAV**: Display favorite channel list you set before.

21. **NUMERIC KEY (0~9)**: Enter a TV/radio channel number or menu option number

22. **◀0▶** : Page up/down on menu or channel list.



- 23. MEDIA :** Access to the USB menu.
- 24. HELP:** Show the scanned satellite list (SAT).
- 25. SUB:** Display the subtitle language list.
- 26. TV/RAD:** Switch between TV and RADIO.
- 27. TXT:** Display the teletext.
- 28. AUDIO:** Display the audio list
- 29. TV button:**

Use the QR code / URL to display the manual for setting the "TV" button on the remote control:

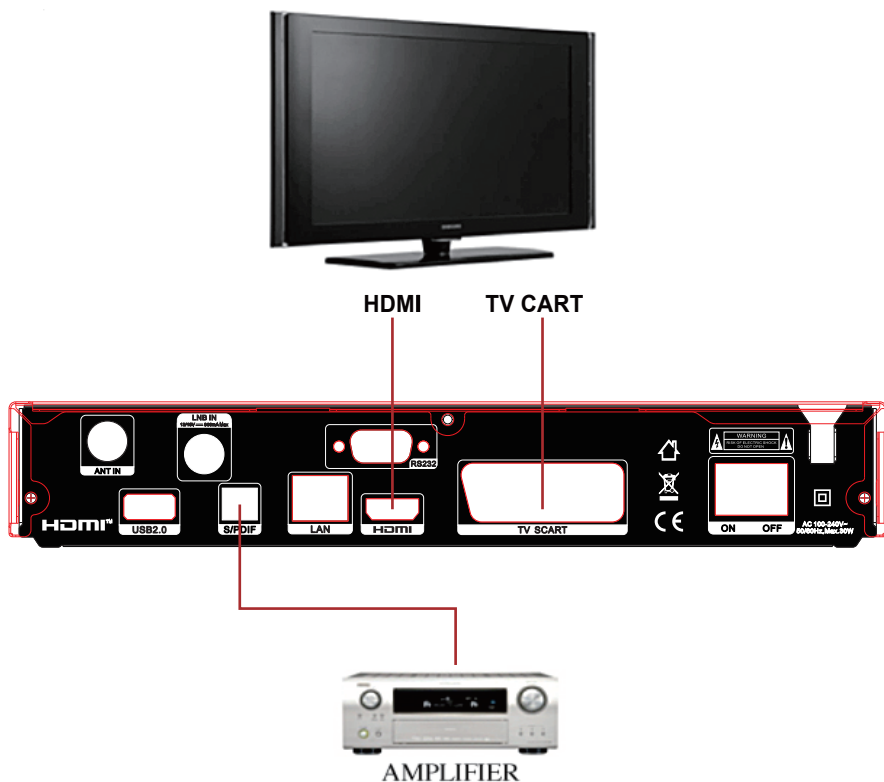
<https://abcomeu.com/Downloads/Manuals/AB-ALLTV/RCU-setup.pdf>



3. Connection with Other Device

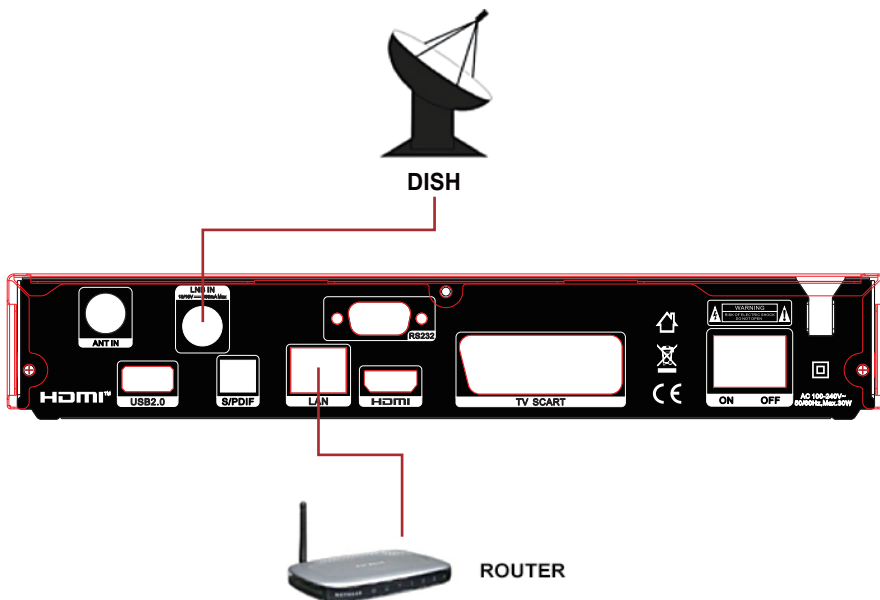
The following diagram shows you the connections among receiver, TV, LNB and other equipment, please read this first if you are not sure about the connection, and it will guide you to the correct connection.

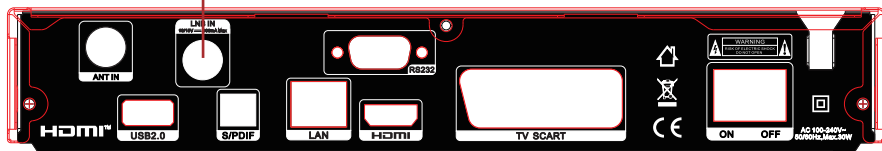
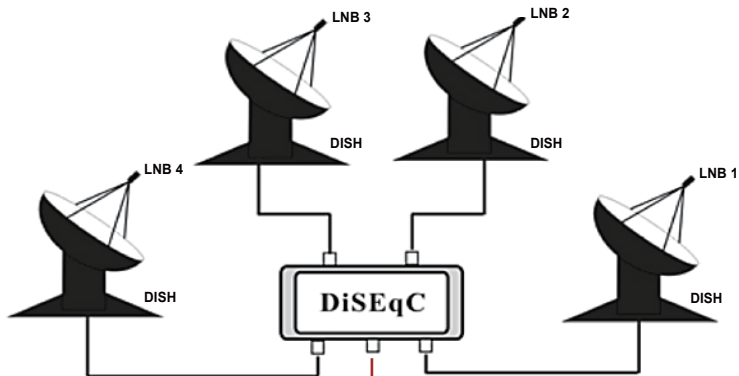
3.1 Connecting to TV



3.2 Connecting the Antenna

You can connect one fixed dish LNB directly to the LNB IN, or connect at least two dishes LNB by DiSEqC Switch.





4. Installation

You should install the receiver when powering on your product for the first time after purchase.

Tip: The default password is 0852. If you have forgotten your password, please contact your local product distributor.

4.1 Powering On

1. Connect the power cord of the product to a wall outlet.
2. Ensure the ON/OFF switch at the rear of the product is switched to ON.
3. Power on by pressing the **STANDBY** button on the remote control or the **STANDBY** button at the front of the product.

4.2 Antenna Settings

Antenna Settings allows you to configure the antenna setting parameters.

Menu->INTALLATION->Antenna Settings

1. **SateLLite:** Highlight the satellite you want to search.

2. **Transponder (TP for short):** Press the ▼ / ▲ button to change the TP.

3. **LNB Type:** Press the ▼ / ▲ button to change the LNB frequency.

4. **LNB Power:** Press the ▼ / ▲ button to select the required LNB power.

5. **22kHz:** Press the ▼ / ▲ button to select **ON**, **OFF** or **Auto**.

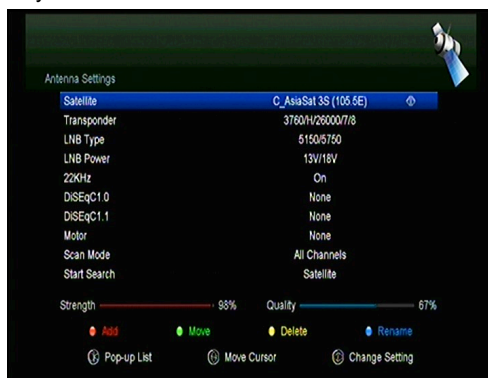
6. **DiSEqC 1.0:** Press the ▼ / ▲ button to select the required DiSEqC1.0 input.

7. **DiSEqC 1.1:** Press the ▼ / ▲ button to select the required DiSEqC1.1 input.

8. **Motor:** Press the ▼ / ▲ button to select DiSEqC1.2 or USALS.

9. **Scan Mode:** Press the ◀ / ▶ button to select scan mode.

10. **Start search:** Press the ▼ / ▲ button to select Satellite & Multi-Sat & Blind



scan & Transponder & Multi-Transponder which you want to start search.

4.2.1 Antenna Settings for Satellite

Press the ▼/▲ or OK button you can see the pre-stored Satellite list, in this menu, you can execute select, Add, Move, Delete, Rename Satellites.

➤Select

In this menu, you can press the ▲/▼ keys choose the satellite which you want to use, and then press the OK to confirm the setting.

➤Add

Press RED button to add a new satellite. Here you can input new

Satellite angle, Satellite Direction (East, West), Band (Ku, C). OK to confirm the setting and this new satellite will be added to the end of the Satellite list.

➤Move

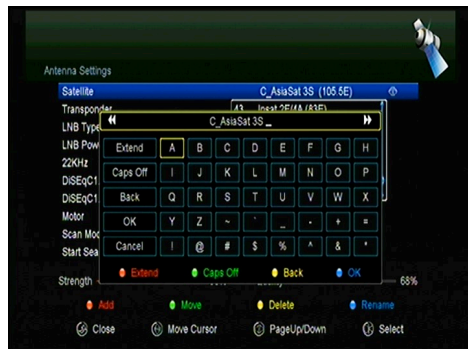
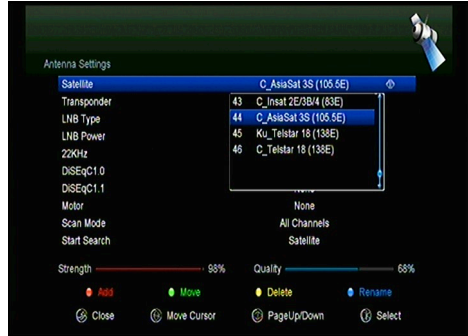
In this menu, you can Select the satellite that you want to move from the satellite list

by pressing the GREEN button, then press OK, you will be asked to move the satellite to put where, input the destination number and press OK. Then you can move one satellite from one position to another.

➤Delete

You can delete the user

satellite. Select the satellite that you want to delete from the satellite list. Then press the YELLOW button. You will be asked to confirm whether delete the



satellite or not. If you select **YES**, all the channels and transponders in the selected satellite will be deleted. And the selected satellite will disappear.

➤**Rename**

You can press the **BLUE** button to change the satellite name. When the keyboard popup, you can select the character which you want to edit the name.

4.2.2 Antenna Settings for Transponder

If you change the satellite, the transponder will be changed automatically. You will find the transponder list of selected satellite here. In this menu, Press the **▼/▲** or **OK** button you can see the pre-stored Transponder list, and you can execute Select, Add, Delete, Edit Transponders.

➤**Select**

In this menu, you can press the **▲/▼** keys choose the Transponder which you want to use, then press **OK** to confirm the setting.

➤**Add**

You can press the **RED** button to add a transponder. Here you can input new Transponder frequency, choose polarization (Ver, Hor), input new symbol rate, and **BLUE** choose FEC (1/2, 2/3, 3/4, 6/5, 7/8, Auto). **OK** to confirm the settings, and this new Transponder will be added to the TP list in ascend order sorted by frequency.

➤**Delete**

You can delete the Transponder of the satellite. Select the Transponder that you want to delete from the TP list. Then press the **GREEN** button. You will be asked to confirm whether delete the satellite or not. If you select **YES**, all the channels in the selected Transponder will be deleted, and the selected Transponder will disappear.

➤**Edit**

Press **yellow** button to edit. Here you can set the Transponder frequency, polarization, symbol rate and FEC.

➤**Delete All**

Press the button. You can delete all the channels and Transponder in the

selected satellite will be deleted.

4.2.3 Search Channels from Satellite

A: Satellite Search

1. Highlight the *Satellite* and press the OK button to enter satellite list. And then select one satellite you want to search.
2. Complete the antenna settings of this satellite.
3. Highlight the *Start Search* and select *satellite* then press the OK button to confirm.

B: Multi Satellites Search

1. Highlight the *Start Search* and select *Multi satellites* then press the OK button.
2. Highlight the satellites in the satellite list, but make sure they are all configured to your DiSEqC Switch before press the OK to mark them.
3. Press **Exit** will start searching programs of the satellites you have marked.

C: Blind Search

1. Highlight the *Satellite* and press the OK button to enter satellite list. And then select one satellite you want to search.
2. Complete the antenna settings of this satellite.
3. Highlight the *Start Search* and select *Blind Search* then press the OK button to confirm.

D: TP Search

1. Highlight the *Satellite* and press the OK button to enter satellite list. And then select one satellite you want to search.
2. Complete the antenna setting of this satellite.
3. Highlight the *Transponder* and press the OK button to enter *TP* list. And then select one transponder you want search.
4. Highlight the *Start Search* and select *Transponder* then press the OK button to confirm.

E: Multi TP Search

1. Highlight the *Satellite* and press the OK button to enter satellite list. And then select one satellite you want to search.
2. Complete the antenna setting of this satellite.
3. Highlight the *Start Search* and select *TP Search* then press the OK button to

confirm.

4. Highlight the transponders in the TP list press the OK to mark them.

5. Press Exit will start searching programs of the transponders you have marked.

4.2.4 Antenna Settings for Motor

Menu-> INTALLATION ->Antenna Settings->Motor

1. Motor Mode:

Select **DiSEqC 1.2** or **USALS** using the ◀▶ button. DiSEqC

1.2: General motor antenna

using DiSEqC 1.2. USALS:

Motor antenna using USALS.

➤**Move Auto[W/E]**

Press ▼/▲ button, the dish will be motorized to East/West continuously, it will stop until it find the best signal.

➤**Move west-east**

Press ▼/▲ button, the dish will be motorized to East/West step by step, until you find the best signal showed on the signal bar.

➤**Fine Tuning(1)**

Input digital button to set the moving step

➤**Store Position**

Save the current position you searched.

➤**Go to Position**

Press OK button to move the dish to the position which you saved.

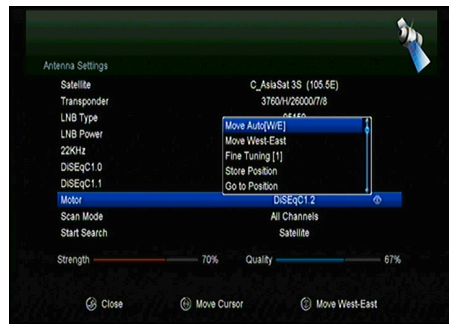
➤**Go to Reference**

Press OK button to move the dish to 0 position.

➤**Set West Limit**

You can set the maximum motor limit for both West to prevent damage to the antenna.

➤**Set East Limit**



You can set the maximum motor limit for both East to prevent damage to the antenna.

➤Disable Limit

Disable West limit and East limit.

➤Go to X.X

Press OK button to move the dish to the USALS Setup.

Tip: Before you use **USALS**, you should go to Main Menu → **INSTALLATION** → **USALS Setup** to set you local position firstly.

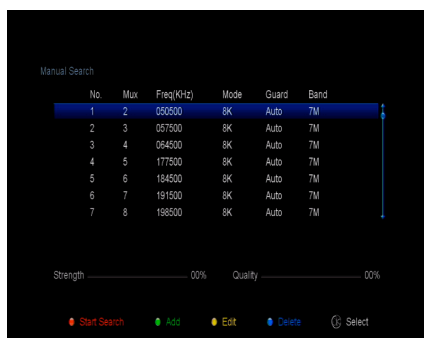
4.3 Fast scan

To fast search channels by different providers base on Astra (19.2) satellite and the 12515 transponders.

4.4 Terrestrial Menu

4.4.1 Manual Search

Enter DVB-T2 TP list, press OK to select the TP, you can Start Search, Add/Edi/Delete Transponders .



4.4.2 Auto Search

Select Auto Search, it will enter searching all TP.

4.4.3 Antenna Power Setting

Enter this menu to setting DVB-T2 power ON/Off.



4.5 Cable Menu

4.5.1 Manual Search

Enter DVB-C menu, press ▼ / ▲ to select the TP, you can Start Search, Add/Edi/Delete Transponders .

4.5.2 Auto Search

Select Auto Search, it will enter searching all TP.

4.5.3 Blind Search

Select Blind Search, it will enter blind search.

4.6 Factory Default

You can restore the product to the factory default and you can also setup it according to the wizard.

Warning: Please note that once you perform **Factory Default all**, all data and settings will be deleted.

1. **Menu->INSTALLTION -> Factory Default**

2. Input the password.

3. Highlight the option you want and press the OK button to execute it.

Tip: If you select "yes", all data and setting will be lost. Then waiting a moment, you will view the OSD language menu where you can select the language according your mind.

1) **All:** All data and settings will be deleted.

2) **Channel List Only:** All channels data will be deleted.

3) **Radio Channel Only:** All radio channels data will be deleted.

4) **Scramble Channel Only:** All scramble channels data will be deleted.

5) **TP Channel Only:** All the channels data in the selected Transponder will be deleted.

6) **SAT Channel Only:** All the channels data in the selected satellite will be deleted.

4.7 USALS Setup

Menu-> INSTALLATION ->USALS Setup

If you set the Motor Mode to USALS, you need set the longitude and the latitude in USALS Setup.

5. Channel Manager

Tip: You can press the **Sat** button to choose different satellite according to the **help** information, press **OK** to confirm, then all the channels of this sat will be display.

5.1 Edit Channel

Menu->EDIT CHANNEL->TV Channels / Radio Channels

Edit Channels enables you to move, delete, rename, lock/unlock, swap the channels in the channel list conveniently.

Tip: Radio Channels operation

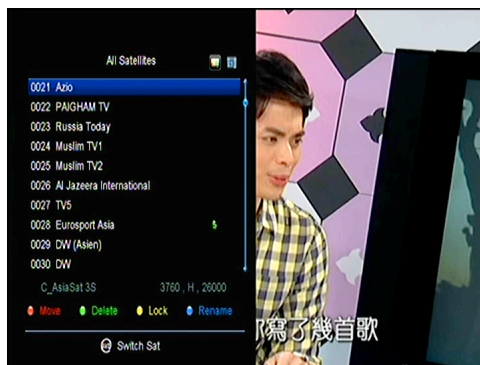
similar to the **TV Channels**.

1. Move Channels

1) Press **RED** button to enter move mode.

2) Highlight the channel you want to move and press **OK** to select the channel.

3) Press the **▲/▼** button to the destination in the channel list and press the **OK** button.



1.1 Move Group Channels

1) Highlight the channel you want to group move. Then press the **BLUE** button to sign the channel.

2) Press the **▲/▼** or **▼/▲** button to highlight other channels you want to

group move.

Then press the **BLUE** button to sign the channel one by one.

3) Press the **▲/▼** to the destination in the channel list and press **OK** to confirm.

2. Delete Channels

1) Highlight the **Delete** function using **▼/▲** button or press **GREEN** button directly.

2) Press the **▲/▼** to highlight the channel you want to delete, press the **OK** button to sign the channel.

3) Press the **EXIT** button, here, select *Yes* will delete the chosen channels.

3. Lock/unlock Channels

1) Highlight the **Lock** function using **▼/▲** button or press **YELLOW** button directly.

2) Highlight the channel you want to lock, press the **OK** button to confirm.

3) Input the password to lock the channel. If you want to lock another channel, you will not be asked to Input the password again until you press **EXIT**.

Note: If the highlighted channel is locked, press the **OK** button is switched into **Unlock**.

4. Rename Channels

1) Highlight the **Rename** function using **▼/▲** button or press **BLUE** button directly.

2) Highlight the channel you want to rename, press the **OK** button.

3) Enter a channel name directly using the keyboard displayed on the screen and press the **BLUE** button to complete.

5.2 Edit Favorite

Menu->EDIT CHANNEL->Favorites

You can add or remove channels from the favorite groups.

1. Highlight the channels you want to add or remove from the favorite channel list.

2. Press the ▼ / ▲ button to change the favorite group and press the OK button to mark the channel as selected favorite group. And you also can press the color button directly to add the channel to the corresponding favorite group.
3. Press the EXIT button to exit the menu and save it.

Note:

If you select a favorite list, press the CH+ / CH- button can only change the channels in this favorite list and press the OK button can only display the channels in this favorite list.

5.3 Sort Channels

You can sort the channels list.

Menu-> EDIT CHANNEL ->Sort Channels

Highlight the option you want and press the OK button to sort the channel list.

You can sort by Alphabet, Transponder, FTAToCAS, Favor and Default.

5.4 User Channel List

User Channel List allows you to save or load all the data and settings.

1. **Menu->EDIT CHANNEL-> User Channel List->Save User Data**

2. **Menu->EDIT CHANNEL-> User Channel List->Load User Data**

6. Settings

6.1 System Settings

Menu->SETTINGS->System Settings

Tip: You can set all the settings here by pressing ◀ / ▶ button.

- 1. **Menu Language:** Set the menu language.
- 2. **Audio1:** Set the preferred audio language.
- 3. **Audio2:** Set the sub-prime audio language.
- 4. **AD server:** You can set on or off.
- 5. **Subtitle Language:** Set the subtitle language.
- 6. **Subtitle Control:** Set the subtitle ON or off.
- 7. **EPG Language:** Set the EPG language.
- 8. **TXT Language:** Set the TXT language.

language.

- 9. **LCN:** Set the LCN.
- 10. **Digital Audio:** If a channel has AC3 and PCM audio language at the same time, when you select **RAW** it will set AC3 audio language as default output and when you select **PCM** it will set PCM audio language as default output.



- 11. **Scart Output :** While the **DV-OUT Mode** is set to **576i** or **480i** mode, you can change the scart output mode between **CVBS** and **RGB** mode.
- 12. **Auto Channel Selection:** If you set **ON**, in the channel list will play automatically when you highlight the channel. If you set **OFF**, in the channel list when you highlight the channel, you should press the **OK** button to play it.
- 13. **Auto Exit CH List:** If you set **ON**, the channel list will disappear when you press **OK** on a Highlighted channel. If you set **OFF**, the channel list will

disappear when you press **OK** on a playing channel.

14. **Source Signal Type**: Set the DVB-T/T2 signal type.

15. **Recall List**: You can turn Recall List on or off. If you set **ON**, when you press

Recall button of RCU you can get the recall list. If you set **OFF**, when you press recall button you can go back to the last program you have selected.

16. **Low Power Standby** : You can turn Low Power Standby on or off.

17. **PLSN Super Scan**: you can set yes or on.

18. **Front Panel Light**: Set the brightness of the LED.

19. **Front Panel Display**: Set the LED display channel or clock.

20. **Front Panel Scroll Mode**: Here you can set on ,Always,Once or No Scroll.

21. **Channel List Typ**: Here you can set the channel list type wide or simple.

22. **Network auto update**: Set the SW update by network if automatic or not.

23. **CI Message**: Here you can set to show the CI message or not.

6.2 OSD Setup

Menu->SETTINGS->OSD Setup

1. **Menu Transparency**: Set the transparency of all menus.

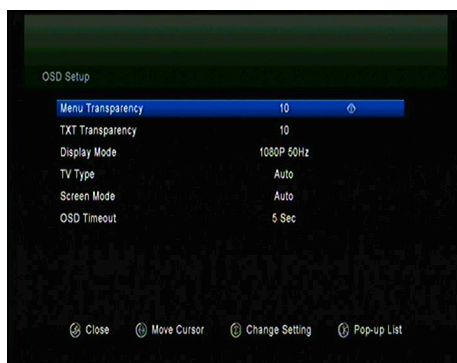
2. **TXT Transparency**: Set the transparency of teletext.

3. **Display Mode**: Set the HD format between 1080p, 1080i, 720p, 576i or 576p.

4. **TV Type**: Set the TV Type on **PAL/NTSC/Auto** state.

5. **Screen Mode**: Set the display format according to the screen ratio. Select TV screen mode either 4:3 or 16:9 according to the TV type, or press the **MODE** button of RCU directly.

6. **OSD Timeout**: Set the display time of the program information.



6.3 Parental control

Menu-> **SETTINGS** ->**Parental Control**

Parental Control allows you to set limits for each program or change your previous password. You can also lock the changes you have made using **Installation Lock**, **Edit Channel Lock** and **System Lock**. And you can change **Age Rating**.

6.4 Times

Menu-> **SETTINGS** ->**Times**

6.4.1 Time Settings

Menu-> **SETTINGS** ->**Times**->**Time Settings**

Time Settings will set the time mode, time zone and summer time.

1. Time Mode

You can switch the Time Mode to **Auto** or **Manual** by pressing

▼ / ▲

button. If the Time Mode is **Manual** you can change the current time and current date.

2. Time Offset

Set the time zone according to your city.

3. Summer Time

If your region needs summer time to correct the current time please make it **ON** by pressing ▼ / ▲ button.

4. Time

You can selete network or satellite.



6.4.2 Event Timer

Event Timer You can set 8 timer events. It will record or play the program automatically according to the timer event list that you set.

1. **Menu**-> **SETTINGS** ->**TIMES**-> **Event Timer**

2. Press the **GREEN** button to setup a timer, and press the **OK** button to save the timer after setup.

Channel

Select the Channel from Channel List.

Date

Input start date of the timer.

Start/Stop

Set Start and Stop time of the timer.

Repeat

<1X> only one time.

<Day> Repeat every day.

<Weekly> Repeat the channel weekly.

<1-5> Repeat the channel from Monday to Friday.

<6-7> Repeat the channel from Saturday to Sunday.

Standby when Stop

If set **YES**, the receiver will go to standby mode after the timer, if set **NO** it won't be standby.

Time Record

If set **YES**, only if there is a USB device, it will be recorded automatically when the timer is started. And the recorded PVR will be saved in USB device. If set **NO**, it will not be recorded.

3. In **Event Timer** menu, highlight one event, press the **RED** button will cancel this timer and press the **YELLOW** button can go to edit this timer.

6.4.3 Sleep Timer

SLEEP Timer can set the automatic turn off time.

1. **Menu**->**SETTINGS** ->**TIMES**-> **Sleep Timer**.

2. Press the **▼ / ▲** button to select the option or input the number at "-- **M**"

option.

3. Press the OK button to save.

6.4.4 APD Settings

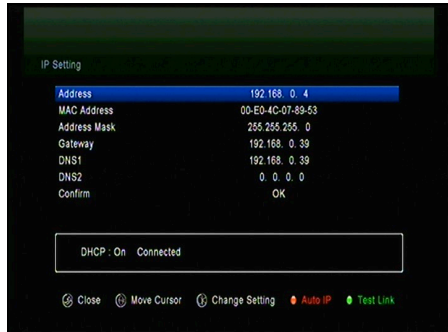
APD Setting can set the power turn down automatically.

6.5 CI Menu

If you want to watch Pay-TV, then you need a CI module with appropriate subscription card. (*CI Menu - only for model 650HD*)

Menu-> SETTINGS ->CI Menu

1. Push the smart card in the CI module. The Golden Chip must show up. And the smart card standard must correspond to CI module. Then insert the CI Module to the CI slot.
2. You can read the detail information about the smart card and CI module after it initialized OK.
3. The Pay-TV which correspond to CI module standard can be decoded.



6.6 Connecting to the LAN

6.6.1 IP Setting

1. Connect one end of the Ethernet cable to the product and the other end to the LAN router

2. Menu-> SETTINGS ->IP Setting

If the Ethernet cable is connected fine, it will display "Connect". In this menu,

you can set IP address manually, also you can get IP address automatically.

RED: Get IP address automatically.

GREEN: Test the network if connect correctly.

6.6.2 Connecting to the 3G

1. Plug in the 3G dongle to the USB port.
2. Enter **Menu->SETTINGS->3G**.
3. selete the access point or set the auto detect on, then you can connect the network.

6.6.3 Wireless connection

1. Plug in the wireless USB dongle to the USB port.
2. Enter **Menu->SETTINGS->Wireless Setting->Search Access Pointer**.
3. Select the network name of your wireless access point from the list.
4. Press the OK button, then input the right password. And you can press **YELLOW** button to disable/enable the wireless connection.

6.7 USB Update

Menu-> SETTINGS ->USB update

USB Update can update software by using USB HDD or USB disk.

6.8About STB

Menu-> SETTINGS ->ABOUT STB

ABOUT STB can get the information about the STB, such as product name, software & hardware version, and serial number and so on. When you need service

from the dealer you need to submit this information in order go get the correct and fast after sales service.

7. X-tras

7.1 Calendar

Menu->X-tras-> calendar

Calendar can get the date information. And you can add the memo of the day.

7.2 Games

Menu->X-tras-> games

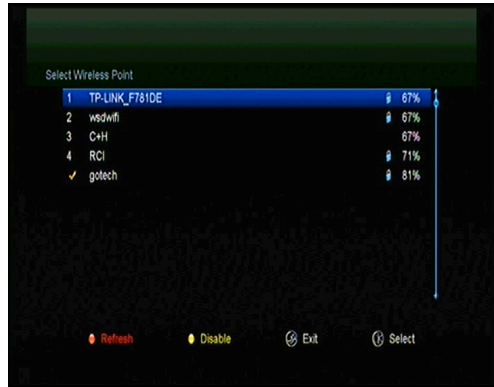
Games offer 9 funny games you can play.

7.3 Network Apps

7.3.1 Network

Player(DLNA DMP)

You can play music, photo and other media files from the DLNA DMP.



7.3.2 FTP Download

You can Download S/W, music, photo and other media files from the FTP.

1. *Menu->X-tras -> Network Apps->FTP Download*
2. Input the correct information for every option.
3. Highlight on the **Connect Net**, press the **OK** button to enter the FTP.
4. According to the prompted information select the file you want to download

and press the OK button to download it to USB device.

5. Press the RED button to enter the *FTP_DOWNLOAD* folder in USB.

7.3.3 Weather Forecast

Menu->X-tras ->Network Apps->Weather

Here you can input the city name to browse the weather of this city in future 5 days.

RED: Change the city and unit of temperature.

7.3.4 Stock View

Menu-> X-tras->Network Apps ->Stock View

You can view stock information.

8. Multimedia

Menu->Multimedia or press the **MEDIA** button directly

Multimedia can play many kinds of media files, you can record program and playback it and you can do various operations when using USB HDD or USB disk.

Note: It supports FAT, FAT32 and NTFS format USB disk or USB HDD.

8.1 USB

1. Tool

➤Rename Files

- 1) Highlight the file or folder.
- 2) Press the **RED** button and Highlight the **Rename**.
- 3) Press the **OK** button can rename the file or folder.

➤ Delete Files

- 1) Highlight the file or folder.
- 2) Press the **RED** button and Highlight the **Delete**.
- 3) Press the **OK** button can delete the file or folder.

➤Move Files

- 1) Highlight the file or folder.
- 2) Press the **RED** button and Highlight the **Move To**.
- 3) Select a destination folder.
- 4) Press the **OK** button to move the highlight folder or file to destination folder.

➤Copy Files

- 1) Highlight the file or folder.
- 2) Press the **RED** button and Highlight the **Copy To**.
- 3) Select another disk partition.

4) Press the OK button to copy the highlight folder or file to disk partition which you selected.

➤**Create New Folder**

1) Press the RED button and Highlight the **Create New Folder**.

2) Press the OK button to create a new folder in current folder.

➤**Sort**

1) Press the RED button and Highlight the **Sort**.

2) Select the sort type. (First Name/Date/Size)

3) Press the OK button to sort by sort type which you selected.

➤**Format Disk**

1) Highlight a disk partition or enter a disk partition.

2) Press the RED button and Highlight the **Format Disk**.

3) Press the OK button and then select a format mode (Fat and NTFS). Then press OK button to confirm format. After formatting, all the files in current disk partition will be lost.

2. Upload

➤**Upload Data ,channel or all to USB**

1) Enter the USB disk.

2) Press the YELLOW button and highlight the **Upload Data ,channel or all channel to USB**.

3) Press the OK button can upload the data and setting to usb disk.

➤**Upload to FTP**

1) Highlight the file or folder.

2) Press the YELLOW button and highlight the **Upload to FTP**.

3) Press the OK button can upload the highlight file or folder to FTP.

8.2 Setting

1. Play Mode

➤**Loop**

Set the Loop state on **Normal**, **Reverse**, **Random**, **Single** or **Off**.

➤ **Slide Show Interval**

Set the Slide Show Interval from

2S-10S.

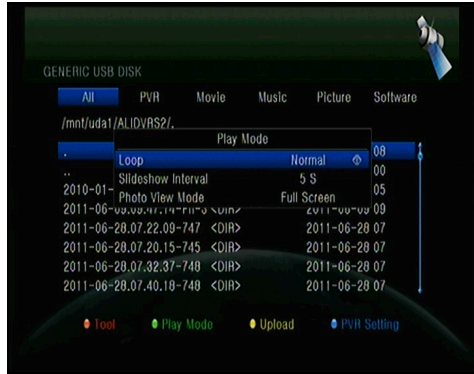
➤ **Photo View Mode**

Set the Photo View Mode state

on **Full Screen**, **2x2**

Thumbnail or **2x3**

Thumbnail.



2. PVR Setting

➤ **Record Partition**

Select the Partition where save your record or other result of your operation.

➤ **Record Type**

Set the Record Type **TS** or **PS**.

➤ **Record Time**

Set the Record Default Time **off**, **30**, **60**, **90**, **120** minute or input number directly.

➤ **Auto Timeshift**

Set start the Timeshift if automatically.

➤ **Timeshift Buffer Size(MB)**

Set the Timeshift Buffer Size **off**, **100**, **200**, **400**, **800**, **1600**, **3200**, **6400**MB.

➤ **Play Start Pos**

When playing the PVR file, set the Play Start Pos whether head of the file or last pos (Stop play by manual last time) of the file.

8.3 Play Files

1. Music

1) Press the ◀/▶ to highlight the **Music**.

2) Press the ▲/▼ to change the folder or file and press the OK button to open the folder or play the music file.

OK: Play the selected file.

▲/▼: Change the highlighted item.

▶: Play the file.

■ : Stop playing file.

I▼▼: Play the previous file.

▲▲I: Play the next file.

◀◀: Fast rewind.

▶▶: Fast forward.

PAUSE/||: Pause.

VOL+/VOL-: Adjust volume.

EXIT: Exit playing state and return to file list menu.

2. Picture

1) Press the ◀/▶ to highlight the

Picture.

2) Press the ▲/▼ to change the folder or file and press the OK button to open the folder or play the picture.

Tip: You can press the **Green** button to go to **Play Mode** Set the **Photo View Mode** state on **Full Screen, 2x2 Thumbnail** or **2x3 Thumbnail** in the USB menu. The picture followed is 2x2 Thumbnail mode.

OK: View the photo.

▲/▼/▼/▲: Highlighted the previous/next photo when photo view mode is **2x2 Thumbnail** or **2x3 Thumbnail**. ▼/▲ button also can rotate the picture when photo

display of full screen.

I▼▼: Play the previous file.

▲▲I: Play the next file.

PAUSE/||: Pause.

EXIT: Exit the current menu.

3. Movie

1) Press the ◀/▶ to highlight the **Movie**.

2) Press the ▲/▼ to change the folder or file and press the **OK** button to open the folder or play the movie file.

OK: View play list or play the highlighted file in the play list.

▶: Play the file.

PAUSE/||:Pause.

■: Stop playing file.

◀◀: Fast rewind.

▶▶: Fast forward.

I▼▼: Play the previous item.

▲▲I: Play the next item.

INFO: Display the playing progress. In this menu, press the **INFO** button again to display the file's detail information.

AUDIO: Set the audio language.

SUB: If the file has subtitle, press the **SUB** button can change the subtitle.

VOL+ /VOL- : Adjust volume.

Find&(0-9): Jump to position as you like.

EXIT: Exit the current menu.

4. PVR

1) Press the ◀/▶ to highlight the **PVR**.

2) Press the ▲/▼ to change the folder or file and press the **OK** button to open the folder or play the PVR file.

You can playback the files you recorded. And the recorded files are saved in folder named ALIDVRS2.

OK: View play list or play the highlighted file in the play list.

▶: Display playing progress.

PAUSE/||: Pause or Step.

■: Stop playing file.

◀◀: Fast rewind.

▶▶: Fast forward.

I▼▼: Play the previous item.

▲▲I: Play the next item.

INFO: Display playing progress. In this menu, press the **INFO** button again to display the EPG information.

AUDIO: Set the audio language.

SUB: If the file has subtitle, press the **SUB** button can change the subtitle.

TEXT : If the file has teletext, press the **TEXT** button can display the teletext.

CH+: Mark on current time when info bar display.

CH-: Jump to mark when info bar display.

Find&(0-9): Jump to the valid time that you input.

◀/▶: Jump to forward or rewind of a time interval when info bar display.

EXIT: Exit the current menu.

5. Play List

You can play the movie/photo/music/PVR files in the Play List.

- 1) In the **USB Menu** highlight a **movie/ photo/music/PVR** file and press the **FAV** button to mark it, then press the **GREEN** button to enter the **Play List** menu, you will see the files marked included in play list.
- 2) In the **movie/ photo/music/PVR Play List**, press **FAV** key to add the all available files to the Play List. (Just according to the help information)
- 3) In the **movie/ photo/music/PVR Play List**, highlight the movie/ photo/ music/ PVR file and press the **Red** button to mark it, then move it to the destination press **OK** to confirm, then you can move the marked file to destination.
- 4) Press the **GREEN** button set the **Play Mode**.
- 5) Press **YELLOW** key to delete highlighted file from **Play List**.
- 6) Press the **BLUE** button to delete all files from **Play list**.

9. Basic Operation

9.1 Audio

You can select the language you prefer in **Audio** if the current program is available in multiple audio languages.

1. Press the **AUDIO** button.
2. Press **▲ / ▼** button and then press the **OK** button to select the audio language you prefer.
3. Select audio direction (*Left, Right, Stereo*) using the **▼ / ▲** button.
4. Press the **EXIT** button to close.

9.2 Satellite List

You can select or hide the satellite that you want.

1. Press the **SAT** button.
2. Highlight the satellite that you want.
3. Press the **OK** button, then it can enter the channel list which only includes the channels of this satellite.
4. Press the **RED** button to hide or show the satellite. If it is hidden, the channels of this satellite will be hidden in the channel list.
5. Press the **Green** button to delete the satellite. And all the channels in this satellite will be deleted.

9.3 EPG

You can view the EPG information of all channels in time and date order.

1. Press the **EPG** button.
2. Press the **GREEN** button to switch EPG mode between *Weekly EPG* and *Day EPG*.

Weekly EPG:

- 1) Press the **▲/▼** button to change program.

2) Press the ◀/▶ button to change the date, and it displays the EPG list in one day of the selected channel.

3) Press OK button, then press ▲/▼ button to highlight the EPG event which you want, and the current EPG detail information will display on the bottom of screen. Highlight the EPG event which you want, press the Record button to enter **Timer Setup** menu. After setup, press the OK button can add the EPG event to the Timer.

Day EPG:

1) Press the ▲/▼ button to change channel.

2) Press the ◀/▶ button to change EPG event of the highlighted channel.

3) Highlight the EPG event which you want, press the Record button to enter **Timer Setup** menu. After setup, press the OK button can add the EPG event to the Timer.

9.4 Subtitle

You can select the language for the subtitle if the program provides subtitle information.

1. Press the SUB button.

2. Select the required subtitle language and press the OK button. The subtitle of the selected language will be displayed at the bottom of the screen.

9.5 Teletext

You can view the teletext information of this program.

1. Press the TXT button.

2. Press the ▲/▼ button to page up or page down.

3. Press the NUMERIC(0-9)

buttons can go to the designated page directly.

4. Press the color button can back to the previous page.

9.6 Find channel

You can find the channels you want quickly just by pressing the **FIND** button directly. Or by pressing **Blue button** in **OK List/FAV List**.

9.7 Program Information

You can view the program information by pressing the **INFO** button while watching a program.

1. General Information

- : It is a FTA program.
- : It is a scramble program.
- : The sound of current program is not Dolby.
- : The sound of current program is Dolby.
- : Current program has no EPG information.
- : Current program has EPG information.
- : Current program has no teletext information.
- : Current program has teletext information.
- : Current program is unlocked.
- : Current program is locked.
- : Current program is not a HD program.
- : Current program is a HD program.

2. EPG Information

Press the **INFO** button twice to view detailed EPG information, press the **▼/▲** to switch current and next and press the **INFO** button once more to hide the detailed EPG information.

10. Channel List

This chapter will help you manipulate the channel list.

Tip:

*You can press the **Sat** button to choose different satellite when you are operating on a channel list, press **OK** to confirm, then all the channels of this sat will be display.*

10.1 OK List

1) Press the **OK**

button to enter the channel list while watching a program.

2) Press the **▼ / ▲** button to switch the channel list type.

(**All Channels/FTA**

Channels/Scramble Channels/HD Channels)

3) Press the **RED** button to sort the channels. Highlight the option you want and press the **OK** button to sort the channel list.

Note: The **Original Channel List** is back to the channel list you sort it last time.

4) Press the **GREEN** button to list the channels by transponder.

5) Press the **YELLOW** button can help you find the channel quick by the first character of name.

6) Press the **BLUE**

button to enter the **Quick Find** menu.

10.2 Favorite List

1) If you have set several favorite lists, press the **FAV** button can enter the favorite list.

2) Press the **▼ / ▲** button to change different favorite list and press the **OK** button can select the a program in current favorite list.

3) Press the **RED** button to sort the channels of the favorite list.

4) Press the **GREEN** button to manipulate the favorite list channels (move, delete, rename, lock/unlock, swap the channels of the favorite list).

5) Press the **YELLOW** button can help you find out channels quick by their first name.

6) Press the **BLUE** button can help you quickly find the channel you want.

Note: If you selected a favorite list, press the **CH+ / CH-** button can only change the channels in this favorite list and press the **OK** button can only display the channels in this favorite list.

11. USB Control

11.1 Recording and Timeshift

1. Start Recording

- 1) You can press the ● button to start recording while watching program.
- 2) If you have set the timer, and set the **Time Record** on, it will start recording automatically according to the start time of the timer.

2. Stop Recording

- 1) You can press the ■ button to stop recording. If you don't press the ■ button, it will stop recording according to the record duration.
- 2) If you have set the timer, it will stop recording automatically according to the stop time of the timer.
- 3) If the free space on the USB HDD or USB disk is insufficient, recording will stop.

3. Other Operations while Recording

While the recording channel is current channel, press the **INFO** button can display the recording time. And press the **INFO** button twice can display the detail information of the recording. Press the ► button will enter the playback mode. Press the ● button can set the record duration. Press the **PAUSE/||** button can pause recording, and continue recording by press **PAUSE/||** button again. Press the ◀/▶▶ button can fast rewind or fast forward in playback mode.

4. Timeshift

Timeshifte allows you to pause a live broadcast and return to it later and continue here you left off. ress the || button to start timeshift. While it is in timeshift mode, press the ► button can play the program, press the **INFO**

button can display the recording information, press the **PAUSE/||** button can pause or play the program, press the **◀◀/▶▶** button can fast rewind or fast forward. Press the **■** button to stop timeshift. If you change to another program or do other operations, it will stop timeshift but still record.

11.2 PVR List

You can enter the PVR list directly and then play the PVR file. In the PVR list you also can delete the PVR files.

1. Press **▶** button enter the PVR list when watching program.
2. Press the **▲/▼** to highlight the PVR file you want to play, press the **OK** button to play in small screen.
3. You can press **BLUE** button to play the PVR file in full screen. And press **Exit** button will return to the PVR List.
4. If you want to delete PVR files, first you must press the **▲/▼** to highlight the PVRfile you want to delete, and press the **YELLOW** button to delete.

12. Additional Information

12.1 Trouble Shooting

Before contacting your local service centre, please read the tips below carefully. If the problem persists after completing the following procedure, please contact your local product distributor or service centre for further instructions.

1. No message displayed on the front display. (The product will not switch on.)

- Check the main power cable and make sure it is plugged into a suitable power outlet.
- Check that the mains supply is switched on.
- Connect the power cable to a different power outlet.
- Check that the power switch is on at the rear of the product. (where applicable)

2. No picture

- Make sure that the product is powered on and in operation mode. (Press the STANDBY button)
- Make sure that the AV/DV-OUT/YUV cable is firmly connected to the TV.
- Make sure that the antenna cable is properly connected to the product.
- Be sure to activate channel search.
- Check the brightness level of the TV.
- Check if the channel is currently on air. Contact the broadcaster to ensure that the channel is running.

3. Poor picture/sound quality

- Make sure there is no mobile phone or microwave oven near the product.
- [Satellite] Check that your dish alignment is correct.
- [Satellite] Change the satellite dish for a larger one as this will increase the signal levels received.
- [Satellite] Replace the LNB with a lower noise factor in cases where the noise

factor is too high.

- [Satellite] Replace the LNB with a new one in case it is damaged or out of order.
- [Satellite] Check the signal levels and adjust your antenna if the level is too low. The signal level may be affected by weather conditions.
- [Terrestrial] Adjust the antenna direction to get a better picture.
- [Terrestrial] Set the antenna power in menu to On, if you use the active antenna to improve the reception.(where applicable)

4. No or poor sound

- Check that your AV/DV-OUT cable is connected correctly.
- Check the volume levels of your TV set and the product.
- Check if the product or TV is on mute.
- Check audio type or soundtrack option. (where applicable)

5. Remote control does not operate.

- To control the product, the top end of the remote control should point directly towards the receiving part of the product.
- Remove and reinsert the batteries in the remote control.
- Replace the batteries in the remote control for a new set.

6. Cannot connect network .

- Make sure the network of your family is good.
- Make sure the Ethernet cable is inserted firmly to the LAN router.
- Make sure the wireless connection can work on other device.
- Input the wireless connection password again.
- Get auto IP again.
- Restart the receiver again.

12.2 Technical Specification

Tuner & Channel

No. of Tuners	DVB-S2
Frequency Range	950 MHz to 2150 MHz
Signal Level	-25 to -65 dBm
LNB Power	13V/18V/14V/19V/OFF, I _{max} = 400mA
LNB Tone Switch	22KHz+/-2KHz, 0.6Vpp+/-0.2V
DiSEqC Control	Version DiSEq C 1.0/1.1/1.2/1.3(USALS)Compatible, Tone burst A/B

No. of Tuners	DVB-T2/DVB-C
Frequency Range	107MHz to 858MHz
RF Impedance	75Ωunbalanced
IF Band width	6M, 7M, 8M
Demodulation	COFDM
FFT Mode	Auto
Constellation	Auto
Guard Interval	Auto
Inner Coding Rate	Auto

MPEG

Transport Stream	MPEG-2 ISO/IEC 13818Transport stream specification
Profile Level	MPEG1,MPEG-2 MP@ML,H.264, VC1, DV, DivX, and MPEG4
Input Rate	80 Mbps for MPEG Transport Stream and 25 Mbps for DV streams
Aspect Ratio	4:3, 16:9
Video Resolution	576i, 576p, 480i, 480p, 720p50, 720p60, 1080i, 1080p
Audio Decoding	MPEG-2 layer I and II (Music cam),MPEG4 AAC and MPEG4 AAC-HE (AAC+),Dolby Digital (AC-3) with bit rates up to 640 K bits /s, LPCM up to 48 KHz,MP3.
Audio Mode	Single channel/Dual channel/Joint stereo/Stereo
Sampling	32, 44.1 and 48 KHz

Power Supply

Input Voltage	AC 100 ~240V, 50/60Hz
Power Consumption	Max. 25 W
Protection	Separate internal fuse. Input shall have lightning Protection

Physical Specification

Weight (Net)	About 2.5kg
Operating Temp	0°C to + 40°C
Storage Temp	-40°C to + 65°C

12.3 Glossary

➤ **Antenna**

A device that collects and radiates electromagnetic waves. Includes a satellite dish and broadband antenna.

➤ **EPG**

An electronic equivalent to a printed television listings magazine; it is an application used with digital set top boxes and digital television sets to list current and scheduled programs that are or will be available on each channel, including a short summary or commentary for each program. The information supplied in the EPG is sent and updated by the channel broadcaster.

➤ **DiSEqC**

DiSEqC(Digital Satellite Equipment Control)system, it is a communication bus between satellite receivers and peripheral equipment using only the existing coaxial cable.

➤ **DVB**

The Digital Video Broadcast group was created to establish a technical framework for the introduction of digital video broadcasting systems.

➤ **LNB (low-noise block converter) or LNBF**

An electronic unit mounted on the satellite dish. It receives the signals

reflected by the dish and converts them to signals that can be used by the digital satellite receiver.

➤ **DV-OUT (High-Definition Multimedia Interface)**

An all-digital audio/video interface that supports standard, enhanced, or high-definition video, plus multi-channel digital audio on a single cable. It transmits all ATSC HDTV standards and supports 8-channel digital audio.

➤ **GHz**

The prefix giga means milliard, and Hertz means cycles per second. Signals in the GHz range are often called microwaves.

➤ **MHz**

The prefix mega means million, and Hertz means cycles per second.

➤ **MPEG**

Moving Picture Experts Group. Established by the International Standards Organization to provide the basis for a picture coding and compression system.

➤ **Forward Error Correction(FEC)**

A system of error control for data transmission.

➤ **Polarization**

Polarization allows several programmers to be fit into the same frequency band. The signals from a satellite are transmitted either with linear (vertical or horizontal) polarizations or circular (right or left) polarization.

➤ **QPSK(Quaternary Phase Shift Keying)**

Phase-shift keying in which four different phase angles are used.

➤ **Transponder**

An automatic device that receives, amplifies and retransmits a signal on a different frequency.

➤ **Symbol rate**

Speed of the digital transmission.

➤ **Scrambled TV programmer**

Some TV programmer are transmitted in scrambled form.

Declaration of conformity

AB-Com, s.r.o. M. Rázusa 4795/34, 95501 Topoľčany, Slovensko

declares that the device **AB Cryptobox 742HD** is in compliance with the essential requirements other relevant provisions of the EU Directive.:

- 2 14/53 EU

The full declaration of conformity is available at the following address:

<https://images.abcom.tv/marketing/DoC/AB-CryptoBox/Declaration-of-Conformity-AB-CryptoBox-742HD-Combo.pdf>



Waste Disposal

Electronic devices are not household waste, but must be disposed of properly in accordance with Directive 2002/96/EC of the EUROPEAN PARLIAMENT AND OF THE COUNCIL of 27 January 2003 on waste electrical and electronic equipment (WEEE). Please dispose of this device at the end of its use for disposal at the designated public collection points.



Environmental protection

Packaging and packaging aids that are no longer needed are recyclable and should always be recycled.

Used batteries are not to be disposed in household waste. These must be handed in at a collection point. Information about the collection points can be obtained from your local municipality.



The terms HDMI, HDMI High-Definition Multimedia Interface, HDMI Trade dress and the HDMI Logos are trademarks or registered trademarks of HDMI Licensing Administrator, Inc.

ab **CryptoBox 752HD Combo**
HD Satellite, Terrestrial and Cable Receiver